



Flat 2, Dene House Oxenden Street, Herne Bay, CT6 8TD



One Bedroom Second Floor Flat, views over Oxenden Square, close to Sea Front and Town Centre. Gas Central Heating. Council Tax Band A. Rent £875 PCM Deposit £1009. A £200 holding deposit is required.

£875



Main Entrance Door

Stairs to second floor, Flat front door

Small Hallway

Door entry phone , power point, loft access, smoke detector

Bathroom

4'6" x 7'8" (1.379 x 2.344)

Part tiled, radiator, LL W/C, bath with shower over, basin

Kitchen

7'7" x 12'11" (2.315 x 3.958)

Range of white units, wood effect worktop, ss sink with mixer tap, combination boiler, space for washing machine, gas hob, electric oven, space for fridge/freezer, radiator , power points

Lounge

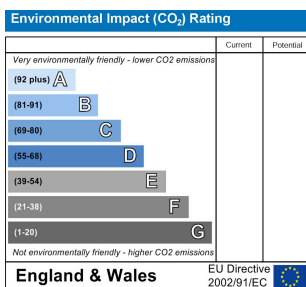
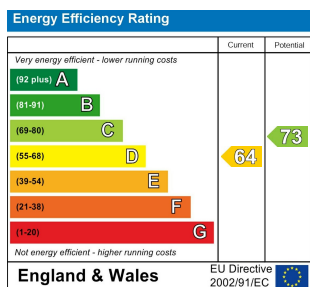
11'1" x 12'10" (3.397 x 3.913)

Power points, 2 x radiator, TV point, dual aspect windows,

Bedroom

12'9" x 7'4" (3.895 x 2.248)

Radiator, power points



Note:

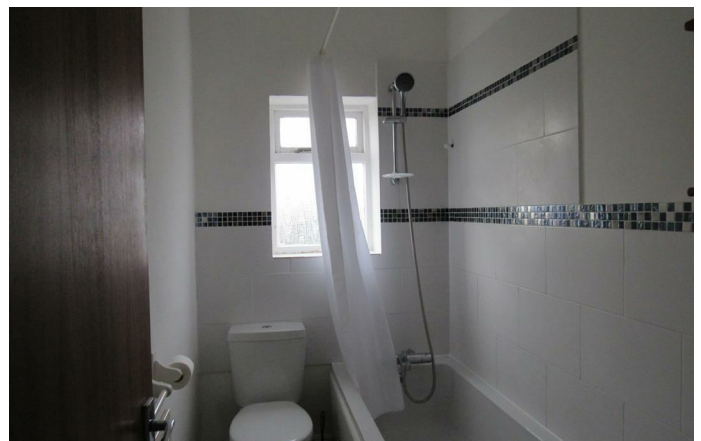
We have not tested the heating system, electrical appliances or the electric, gas and plumbing systems.

If travelling any distance to view this property it is advisable to check the availability and viewing times before hand. Wilbee & Son, as agents, cannot be held responsible for lost journey times and / or any expenses incurred.

These particulars are issued on the condition that any negotiations respecting the property are through Wilbee & Son. Every care is taken in giving particulars but should any error inadvertently occur or any property found to be previously withdrawn or disposed of, Wilbee & Son do not hold themselves responsible for any expenses or loss of time incurred. Neither the Vendor, nor the Partners or any employee of Wilbee & Son make or give any representation or warranty in relation to the property.

Oyster Financial Services is an appointed representative of Openwork Limited, which is authorised and regulated by the Financial Services Authority





WILBEE & SON



01227 374010

property@wilbeeandson.co.uk

